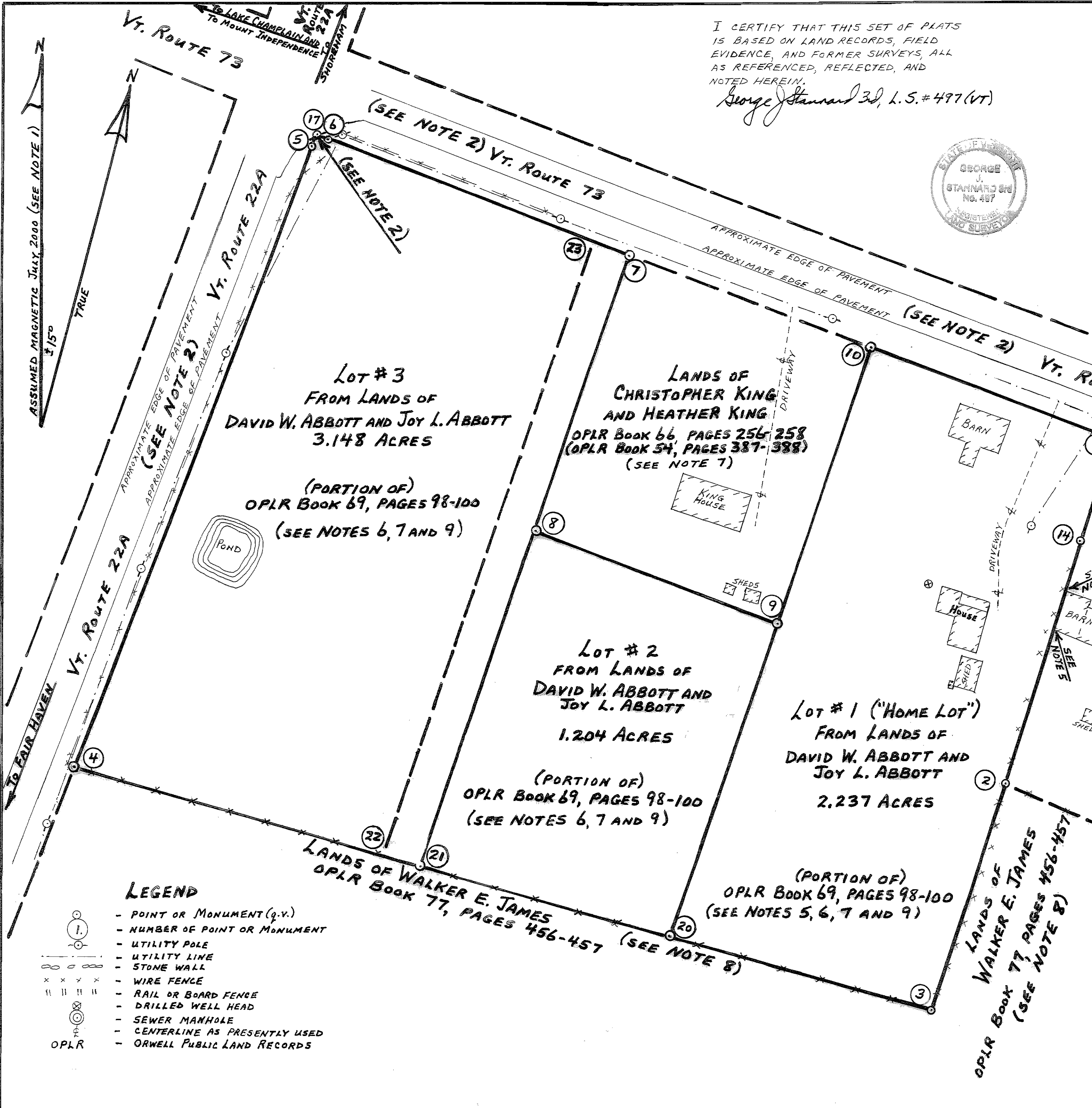
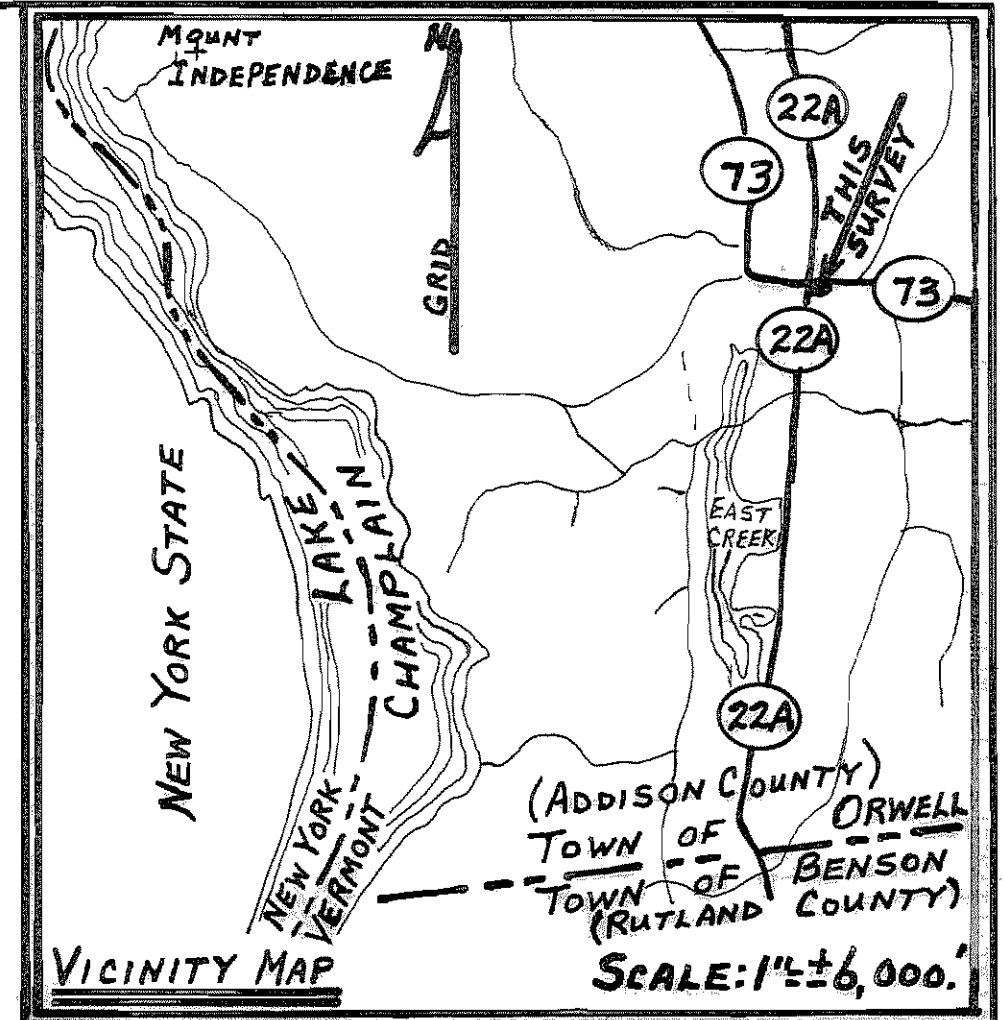
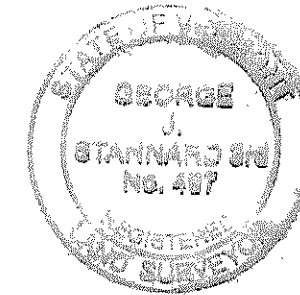


I CERTIFY THAT THIS SET OF PLATS IS BASED ON LAND RECORDS, FIELD EVIDENCE, AND FORMER SURVEYS, ALL AS REFERENCED, REFLECTED, AND NOTED HEREIN.

George J. Stannard 3d, L.S.# 497 (VT)



- LEGEND**
- POINT OR MONUMENT (q.v.)
 - NUMBER OF POINT OR MONUMENT
 - UTILITY POLE
 - UTILITY LINE
 - STONE WALL
 - WIRE FENCE
 - RAIL OR BOARD FENCE
 - DRILLED WELL HEAD
 - SEWER MANHOLE
 - CENTERLINE AS PRESENTLY USED
 - ORWELL PUBLIC LAND RECORDS

GEORGE J. STANNARD 3RD, LAND SURVEYOR
OF FAIR HAVEN, VERMONT

PLAT #1 OF A SET OF TWO PLATS
LANDS OF
DAVID W. ABBOTT AND JOY L. ABBOTT
SOUTHERLY OF VT. ROUTE 73 AND EASTERLY OF VT. ROUTE 22A

ORWELL, VERMONT
(ADDISON COUNTY)

MAY 12, 2008

SCALE: 1" = 50'

FIELD NOTES: 200303-41
200091-132
200